

*Presenter - Julie LaBerge, School Psychologist/Director of Pupil Services; Parent, Model Site Director for the National Professional Development Center on Autism Spectrum Disorders Project*

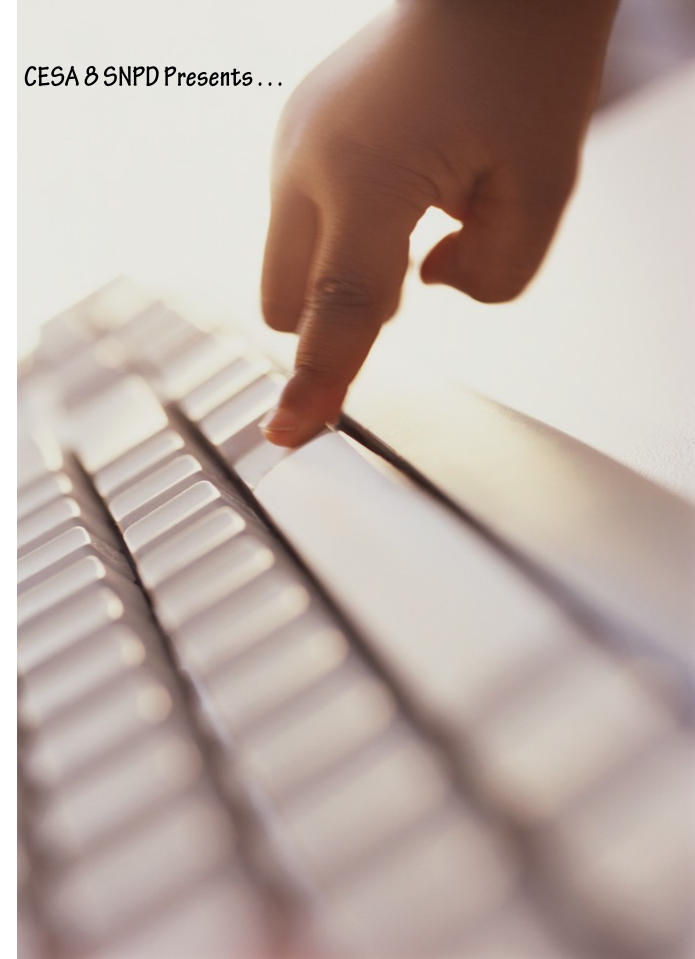
**How to register:**

To register for just one day or all four days log on to the CESA 8 website at [www.cesa8.k12.wi.us](http://www.cesa8.k12.wi.us); scroll down to the bottom of the page and click on [Click here Online Registration and Calendar of Events](#). Note: you will have to register for each day separately.

If you have questions regarding registration you can contact Jessica by e-mail at [jkaczmarek@cesa8.k12.wi.us](mailto:jkaczmarek@cesa8.k12.wi.us) or by phone at 920-855-2114 x241.

**Registration Deadline is  
July 19, 2012**

CESA 8 SNPD Presents...



## Summer Symposium on Autism

*July 31, August 1, 2, 3, 2012*



## Tuesday, July 31, 2012

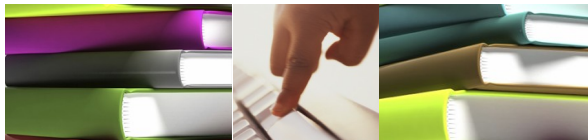
Day 1 - Introduction to Autism—This introduction to autism will provide general knowledge about autism spectrum disorders, offering a parent/practitioner's perspective describing how autism impacts living and learning. The main issues related to autism including the development of language and communication, socializations, and sensory considerations will be discussed. This day is designed for participants with limited knowledge in the area of autism or for those who would like a refresher in autism. Current resources and educational approaches will be shared.

## Wednesday, August 1, 2012

Day 2 - Educational Evaluation, IEP Development, and Addressing Behavior through Functional Behavioral Assessments for Students with Autism Spectrum Disorders—This day will focus on conducting quality educational evaluations for students suspected of having autism. Differences between the medical diagnosis and educational impairment will be presented along with creating a comprehensive IEP team to conduct exceptional evaluations. Additionally, instruction will be provided related to creating IEP's and addressing challenging behaviors through completion of Functional Behavioral Assessments for students with autism spectrum disorders. Ideas to address challenging behaviors will be shared as well.

## Thursday, August 2, 2012

Day 3 - Evidence-Based Practices and Student Panel—This day will focus on Evidence-Based Practices and resources that are available to educators, parents, and anyone in the community interested in learning about autism or how to work with individuals with autism spectrum disorders. Currently there are over 30 Evidence-Based Practices that are available for FREE to anyone for professional development purposes. This day will provide participants with an opportunity to review these resources and learn how to navigate the learning interests. A student panel of teenage students with autism spectrum disorders will be available to share their stories and answer audience questions on this day.



## Friday, August 3, 2012

Day 4 - Evidence-Based Practices (Peer Supports) and Assistive Technology Tools for students with Autism Spectrum Disorders—The emphasis on this day will be use of Peer Supports to support the socialization and academic learning of students with autism spectrum disorders. Current research related to Peer Supports will be shared along with practical implementation examples from the Bondel School District's involvement in the National Professional Development Center on Autism Spectrum Disorders project. Guests from other districts implementing Peer Support programs may be available as well. Assistive Technology for students with autism will be discussed and shared. From iPads, iPods, Kindles, laptop computers, to Smart Pens, come learn about the many ways that technology can be used effectively for students with autism.

Where: CESA 8 Office, 223 West Park Street, Gillett, WI 54124

Time: 8:15 a.m. ~ Check-In 8:30 a.m.—4:00 p.m. ~ Training

Cost: \$60.00 per person/per day for SNPD member districts ~ Lunch & handouts are included.

\$100.00 per person/per day for non-member districts ~ Lunch & handouts are included.

A \$50.00 discount will be given to those who register for all 4 days of training.

Viterbo University graduate credit available at \$110 per graduate credit

Please note the \$110 per graduate credit will be additional cost.

2 graduate credits (must attend all 4 days of training)

1 graduate credit (must attend 2 days of training)